

F6 Strip IP



without filters installed



with square black stealth filter installed



with square white filter installed

- Design features to prevent damage to the LEDs when handling: multiple clear, front standoffs keep the LEDs from getting damaged from impacts, and includes specialized LED board design to improve impact resistance up to 3x that of other products, and resilient led mask design to optimize image viewing angle and uniformity without exposing the LEDs to front or side impacts
- Flexible mounting options include 2pcs adjustable 13mm mounting brackets on either side, as well as 1pc M12 threaded insert in the center
- Optimized heat dissipation ensures an even color across the F6IP Video Strip
- Compact power supply, designed solely for this product, increases the stability of the system
- 2-in-1 power/data cables offer quick connection, and are IP-rated for indoor and outdoor environments
- PowerKON and etherKON break in, break outs, and 2-in-1 linking cables available
- 2 Diffusion filters included with the F6IP video strip (square soft white and square black stealth).
- VIP Drive 83R Nova required for operation

FEATURES

- 6.9 mm pitch high resolution outdoor video strip works with the VIP Drive 83R, using the Novastar control protocol
- High quality black body LEDs accurately reproduce video at 14bit grayscale, operating on a customized receiver card from Novastar
- 5000:1 contrast ratio greatly improves the video performance
- High performance digital LED drivers deliver 3840Hz refresh rate and a clear, vibrant image
- Intelligent, modular LED modules with dedicated memory store factory calibration, ensuring optimal image quality, color uniformity, and simplifies maintenance by making service fast and easy
- 1,000 x 34.5 x 68.2 mm, 4.85 lb (2.2 kg) aluminum extrusion and die-cast housing makes this product among the lightest and slimmest in its class without compromising strength
- Specialized design supports hardware for end-to-end linking/hanging and 180° angling capabilities
- Pixel pitch is maintained for 0° end-to-end linking, as well as mounting next to each other, even when the filters are installed

SPECIFICATIONS

OPTICAL

- Light Source: 720 LEDs (tri-color RGB) SMD 1921, 50,000 hours life expectancy
- Color Wavelength: red (615 to 630 nm), green (515 to 535 nm), blue (460 to 475 nm)
- Calibrated Illuminance: 4500 NITS
- Contrast Ratio: 5,000: 1
- Pixels: 144 x 5
- Pixel Pitch: 6.9 mm
- Minimum Viewing Distance: 10 ft (3 m)
- Pixel Density: 20,736/m²
- Display Refresh Rate: 3,840 Hz

CONSTRUCTION/PHYSICAL

- Dimensions: 39.37 x 1.36 x 2.69 x in (1,000 x 34.5 x 68.2 mm)
- Weight: 4.85 lb (2.2 kg)
- Exterior Color: Black
- Housing Material: Aluminum extrusion and Aluminum die-cast
- Maximum vertical hang: 4 strips
- Transparency: 0%

F6 Strip IP

CONNECTIONS

- Power Connection: Edison (Local) plug to Seetronic TRUE1
- Power Input: Seetronic TRUE1
- Power Output: Seetronic TRUE1
- Data Connectors: Seetronic etherCON SE8FC-L
- Cable Length (power): 5 ft (1.5 m)

CONTROL

- Control Protocol: Novastar
- Video Input (compatible): 60 Hz

ELECTRICAL

- Input Voltage: 100 to 240 VAC, 50/60 Hz (auto-ranging)
- Power Linking: 60 units @ 120 V; 64 units @ 208 V; 70 units @ 230 V
- Power and Current: 32 W, .265 A @ 120 V, 60 Hz
- Power and Current: 52 W, .248 A @ 208 V, 60 Hz
- Power and Current: 53 W, .229 A @ 230 V, 50 Hz

CERTIFICATIONS/QUALIFICATIONS

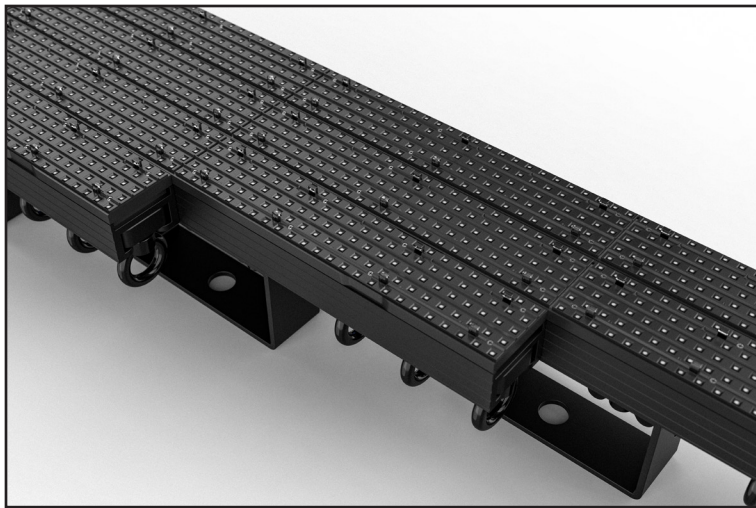
- CE, MET, ROHS, FCC
- IP Rating: IP65, temporary outdoors
- Temperature (Ambient): -4 °F to 140 °F (-20 °C to 60 °C)

REQUIRED ACCESSORIES

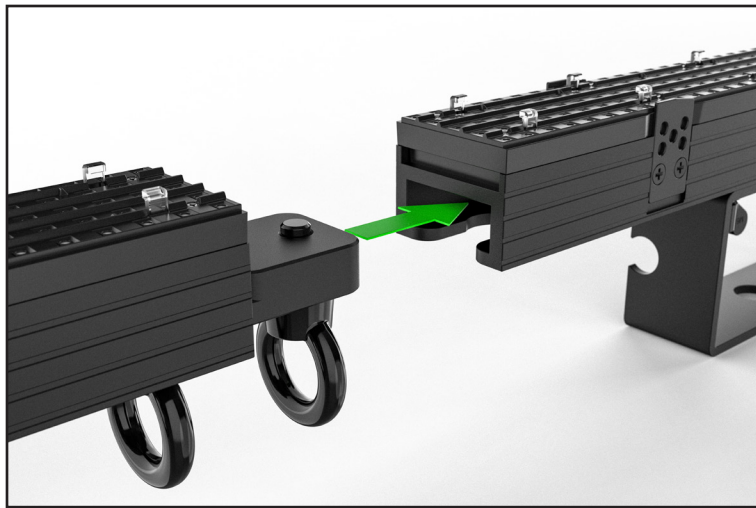
- Required Software: Nova Smart LCT
- Controller (required): VIP Drive 83R
- Compatible Mounting Options: M12 clamp, ½" clamp, ¼-turn clamp
- VID2IN1INCABLE: 2 IN 1 VIDEO INPUT CABLE

OPTIONAL ACCESSORIES

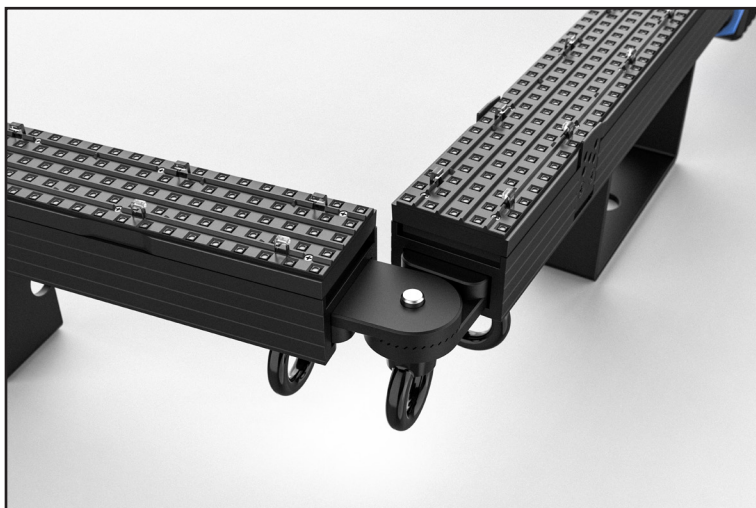
- ArKaos Media Master Express™ + KN software
- Clamps
- Seetronic TRUE1 cables
- Neutrik® etherCON® cables
- VID2IN1EXT13IN: 2 IN 1 VIDEO EXTENSION CABLE-13INCH
- VID2IN1EXT5FT: 2 IN 1 VIDEO EXTENSION CABLE-5FT
- VID2IN1EXT15FT: 2 IN 1 VIDEO EXTENSION CABLE-15FT
- VID2IN1EXT25FT: 2 IN 1 VIDEO EXTENSION CABLE-25FT
- VID2IN1EXT50FT: 2 IN 1 VIDEO EXTENSION CABLE-50FT
- VID2IN1OUTCABLE: 2 IN 1 VIDEO OUTPUT CABLE



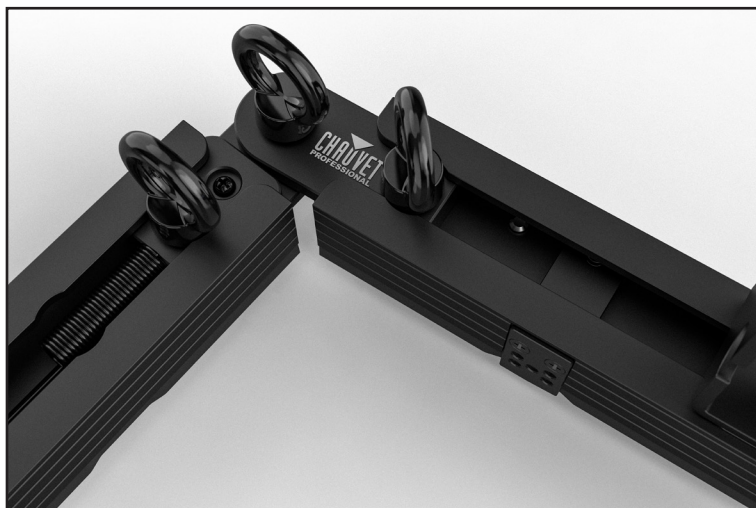
side by side



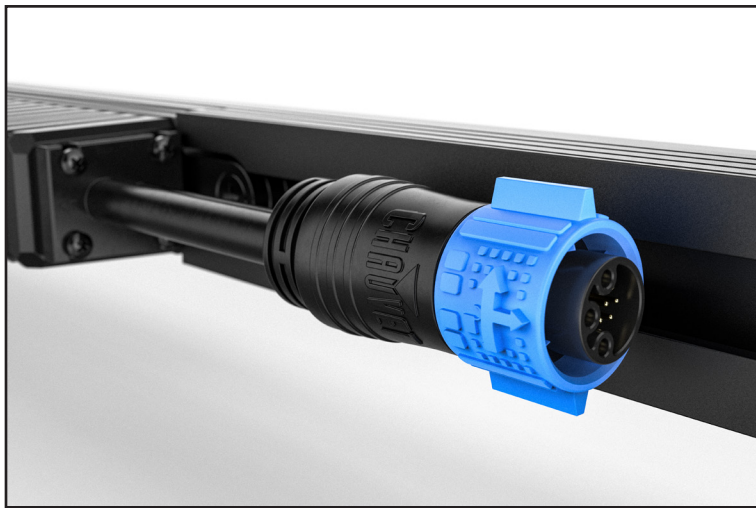
Strip to strip angling hardware (straight)



Strip to strip angling hardware (angled)



Strip to strip angling hardware (angled)



Close up view of the input/output connectors



Bracket showing the cable hidden in them; this is an innovation design feature which helps to prevent cables from being seen from the front